

Photomosaics of East Flower Garden Bank Study Site

The coral reefs of East and West Flower Garden Banks have been the subject of long-term monitoring efforts since 1988. Study sites, 100m x 100m in size, were established at both banks, and repetitive photostations were installed within these study sites to track the benthic community, primarily the massive brain and star corals, over time. For more information about the Flower Garden Banks National Marine Sanctuary Long-Term Monitoring project, see <https://flowergarden.noaa.gov/science/eastwestmonitor.html>.

In 2019, Flower Garden Banks National Marine Sanctuary partnered with Dr. Art Gleason at the University of Miami, Physics Department, to collect the high-resolution photo mosaics at the East Flower Garden Bank study site (see map) for the first time. Now, you can explore this study site yourself, in great detail!

Take a deep dive at East Flower Garden Bank! http://web2.physics.miami.edu/~agleason/mosaic_results/fgb2019/

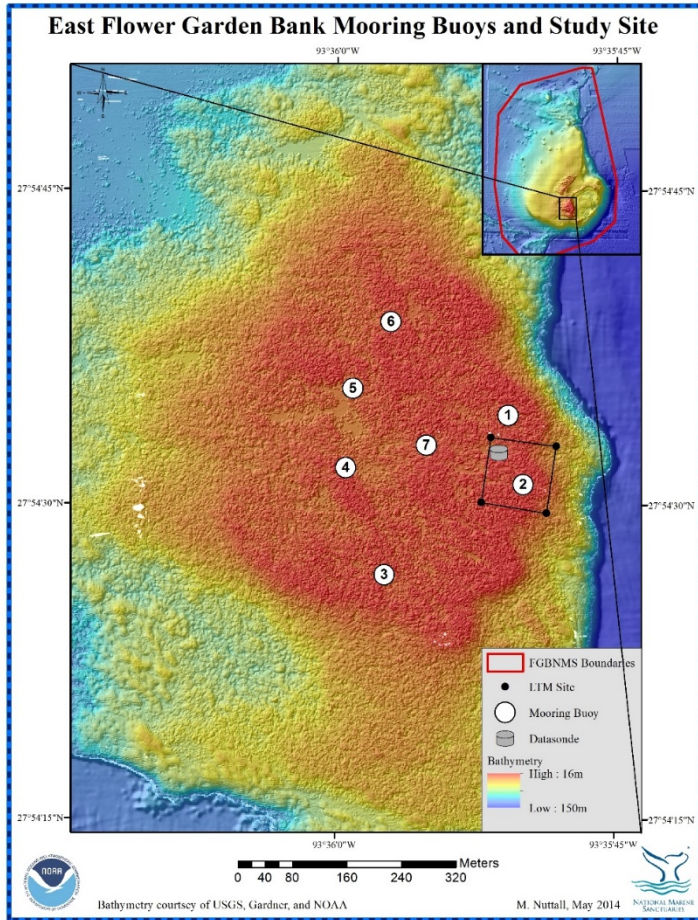
Use the Zoomify link on each quadrant of the study site to fly around and look at the corals in 2-D, using the online tool. If you want to get a 3-D feel, click on the Potree online tool. You can download the datasets, but be warned – they are ENORMOUS!



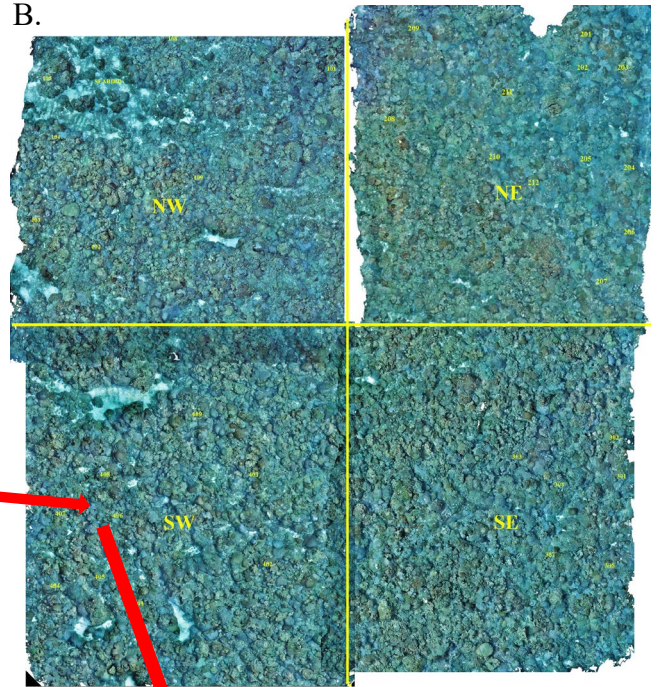
Divers use scooters to collect the imagery needed to build the mosaics. Photo: G.P. Schmahl/NOAA

For more information, contact Michelle.A.Johnston@noaa.gov

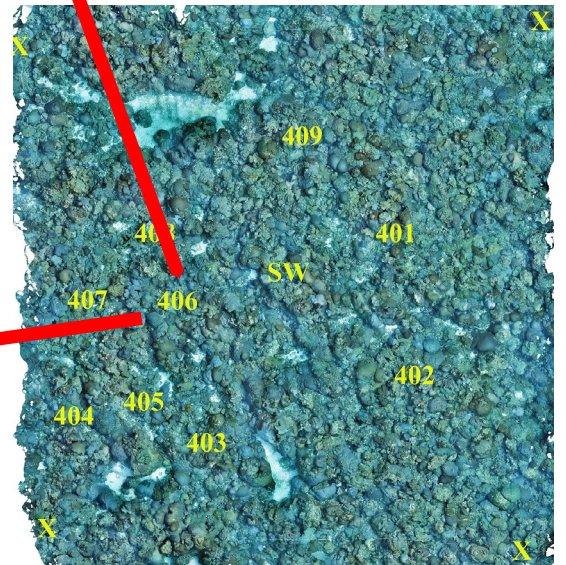
A.



B.



C.



D.



- A. Map of East Flower Garden Bank (EFGB) showing the locations of mooring buoys and the study site
- B. Compilation of all four quadrant photomosaics at the EFGB study site
- C. Photomosaic of the southwest quadrant of the EFGB study site, showing the location of repetitive photostations
- D. Repetitive photostation 406 in the southwest quadrant of the EFGB study site